

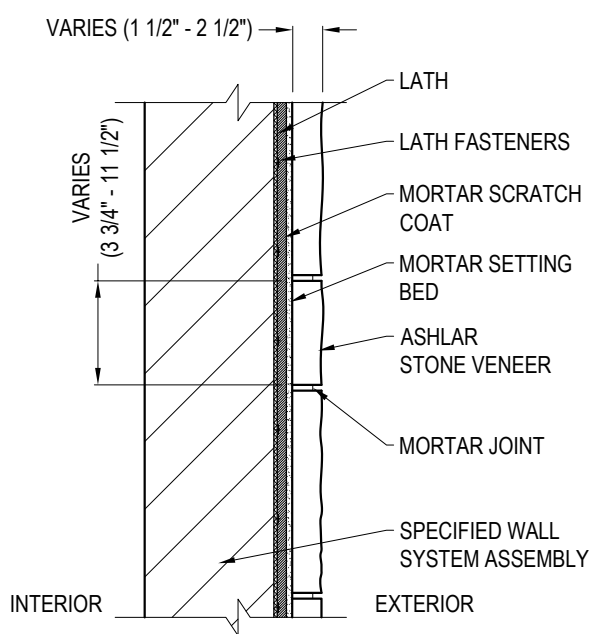
PIONEER • STONE •

A DIVISION OF J&N STONE

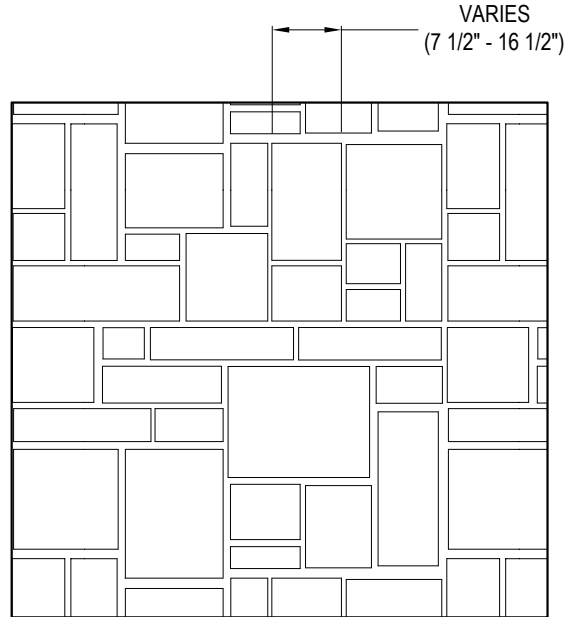
J&N STONE, INC.
135 BARGAIN BARN RD.
DAVENPORT, FL 33837
PHONE: (863) 422-7369
FAX: (863) 419-9213
www.jnstoneveneer.com

SELECT DESIRED COLOR:

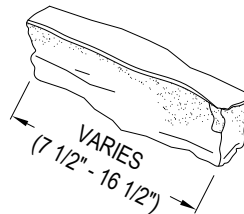
- | | |
|-----------------------------------|--------------------------------------|
| <input type="checkbox"/> AUSTIN | <input type="checkbox"/> NEVADA |
| <input type="checkbox"/> COLORADO | <input type="checkbox"/> REFTON |
| <input type="checkbox"/> SARASOTA | <input type="checkbox"/> TIMBERCREEK |



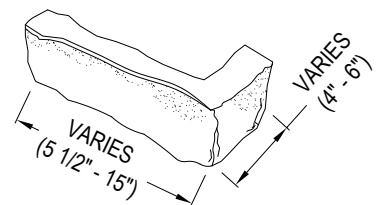
TYPICAL SECTION



PATTERN - ASHLAR



FLAT DETAIL



90° CORNER DETAIL

NOTES:

1. INSTALLATION TO BE COMPLETED IN ACCORDANCE WITH MANUFACTURER'S SPECIFICATIONS.
2. DO NOT SCALE DRAWING.
3. THIS DRAWING IS INTENDED FOR USE BY ARCHITECTS, ENGINEERS, CONTRACTORS, CONSULTANTS AND DESIGN PROFESSIONALS FOR PLANNING PURPOSES ONLY. THIS DRAWING MAY NOT BE USED FOR CONSTRUCTION.
4. ALL INFORMATION CONTAINED HEREIN WAS CURRENT AT THE TIME OF DEVELOPMENT BUT MUST BE REVIEWED AND APPROVED BY THE PRODUCT MANUFACTURER TO BE CONSIDERED ACCURATE.
5. CONTRACTOR'S NOTE: FOR PRODUCT AND COMPANY INFORMATION VISIT www.CADdetails.com/info AND ENTER REFERENCE NUMBER 5521-006.

